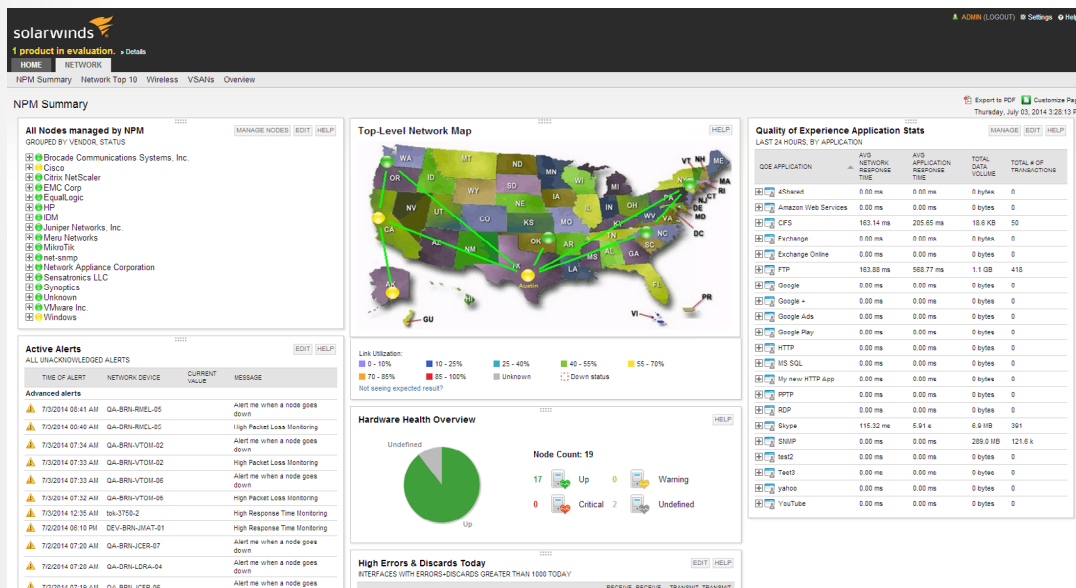




# SOLARWINDS NETWORK PERFORMANCE MONITOR



**DOWNLOAD FREE TRIAL**

Fully Functional for 30 Days

*Fault, Availability, Performance, and Deep Packet Inspection*

**SolarWinds® Network Performance Monitor (NPM)** is powerful and affordable network monitoring software that enables you to quickly detect, diagnose, and resolve network performance problems & outages.

## NETWORK PERFORMANCE MONITOR AT-A-GLANCE

- » Speeds troubleshooting, increases service levels, and reduces downtime
- » Monitors & displays response time, availability, and performance of network devices
- » **NEW in v11.5:** Enhanced network visibility with automatic capacity planning, wireless heat maps, and topology-aware intelligent alerts
- » Improves operational efficiency with out-of-the-box dashboards, alerts, and reports
- » Automatically discovers network devices and typically deploys in less than an hour

## FEATURES

### Network Availability & Performance Monitoring

Monitors network device and interface availability and performance indicators, such as bandwidth utilization, packet loss, latency, errors, discards, CPU, and memory for SNMP and WMI-enabled devices.

### Deep Packet Inspection & Quality of Experience

Get an at-a-glance summary of network and application performance metrics using deep packet inspection and analysis. Quickly identify reductions or changes in application performance and determine if the change is caused by the application or the network.

### Automated Network Device Discovery

Schedule network scans from an easy-to-use, Web-based discovery wizard; identifying new network devices and ensuring you are monitoring all of your critical equipment.

### Dynamic and Customizable Network Mapping

Drag and drop network devices to custom network maps and automatically view connections, layer-2 link utilization between devices and their real-time status. Visualize wireless signal strength in your environment and improve network coverage through automated wireless heat maps.

### Network Capacity Planning

Network Performance Monitor makes it easy to manage and optimize network infrastructure by alerting you on projected capacity exhaustion for key metrics, such as bandwidth utilization, memory utilization, disk space, etc.

### Multi-Vendor Device Support

Gain out-of-the-box, multi-vendor device support for today's complex & growing network environments. SolarWinds NPM monitors availability and performance statistics for any router, switch, firewall, VPN concentrator, wireless access point, and other devices that support standard protocols.

### Hardware Health Monitoring

Get at-a-glance insight into the health of your network hardware by monitoring, alerting, and reporting on the state of key device sensors, including temperature, fan speed, and power supply.

### Application Performance & Health Dashboard

View top 10 graphs and tables, as well as application details, a list of nodes providing the target application, and a summary of any nodes exceeding pre-set thresholds.



Fully Functional for 30 Days

## Deep Packet Inspection & Analysis Sensors

Quickly and easily deploy packet analysis sensors using a step-by-step wizard to monitor application and network performance.

## Intelligent Network Alerting

Quickly configure alerts for correlated events, sustained conditions, and complex combinations of device states. Topology and dependency-based alert suppression enables you to intelligently escalate alerts for issues that are truly critical. Create custom alerts with nested conditions and configure them through the web console.

## Statistical Network Thresholds & Baselines

Configure alerts accurately by calculating dynamic baseline threshold data. NPM's Baseline Threshold Calculator automatically gathers baseline data and calculates Warning and Critical thresholds according to the baseline of each workload.

## EASY-TO-USE NETWORK MANAGEMENT SYSTEM

### Quick, Do-It-Yourself Deployment

Download, install, and deploy Network Performance Monitor in less than an hour, using three simple steps—install, configure, and discover your network. Then NPM will automatically start monitoring your network and for fault and performance issues.

### Intuitive and Customizable Web Interface

Simplify network troubleshooting with a Web interface that is customizable, intuitive, and easy-to-use.

### Drag-and-Discover Performance Charts


Accelerate and simplify network troubleshooting with real-time, interactive charts and graphs of key device performance statistics.

### Centralized Message Center

Get a central view for all notification messages about your network's performance, so you can streamline troubleshooting with alerts, syslog data, events, traps, and other messages in a single interface.

### Dynamic Service Groups

Group network devices by virtually any category and roll up network performance and service level status by location, business center, or any other grouping.

 **DOWNLOAD FREE TRIAL**  
Fully Functional for 30 Days

## Customizable Performance and Availability Reports

Generate network performance reports using out-of-the-box templates that can be customized with a few mouse clicks; automating report creation and distribution.



Fully Functional for 30 Days

## ADVANCED NETWORK & IT INFRASTRUCTURE MONITORING

### Network Route Monitoring

Monitor network route information and receive alerts when issues arise, and get a combined view of real-time network route information alongside device information. You can view routing tables, changes in default routes, BGP transitions, and flapping routes, including support for major routing protocols (RIP v2, OSPF v2 & v3, EIGRP, BGP).

### Network Multicast Monitoring

View of real-time multicast information alongside device information so you can drill-down and see route details of multicast nodes and monitor routers, switches, and end-points that receive & forward multicast packets.

### Integrated Wireless Polling

Manage wireless thin and autonomous access points and their associated clients. Now SolarWinds NPM can monitor your wireless devices alongside your wired devices and provide you with alerts, reports, and Top 10 lists for your wireless infrastructure.

## Customizable Performance and Availability Reports

Generate network performance reports using out-of-the-box templates that can be customized with a few mouse clicks; automating report creation and distribution.

### Custom MIB Poller

Create a custom poller to monitor any SNMP-enabled device, collect detailed data from MIB tables, and monitor virtually any statistic available on network devices. You can create or import these pre-packaged pollers into NPM, and ensure the CPU and memory utilization properties of the device/interface are monitored.

### Virtual Storage Area Network (VSAN) Monitoring and Reporting

Get dedicated views into VSAN devices and quickly identify how much traffic is passing through each device and interface, which ports belong to which VSANs, which type of media each device is leveraging, and much more.

## Integrated Virtual Infrastructure Monitoring

Leveraging a built-in virtual infrastructure monitoring module, NPM enables you to monitor your VMware® & Hyper-V® data centers, clusters, hosts, and virtual machines.



Fully Functional for 30 Days

## Cisco® Unified Computing System (UCS) Support

Simplify the management of your Cisco Unified Computing System components with a unified view of data center network health through a single-pane-of-glass.

## Cisco EnergyWise™ Monitoring

View EnergyWise device management data to measure, report, and reduce the energy consumption of devices connected to EnergyWise-enabled switches.

## Fibre Channel Switch Monitoring

NPM offers monitoring support for Fibre Channel devices manufactured by Cisco MDS, Brocade, and McData.

## SOLARWINDS NETWORK PERFORMANCE MONITOR DOES MORE...

### Microsoft® Active Directory® Integration

Leverage your existing Microsoft Active Directory user accounts to allow users to log in to SolarWinds NPM. Users and groups can automatically log in using custom username/password or optionally use an AD pass-through login to bypass the login screens altogether.

### Mobile Views for iPhone®, Blackberry®, and Android™

Monitor network performance from popular mobile Web browsers including iPhone, Blackberry, and Android.

### Microsoft System Center Operations Manager (SCOM) Integration

A free SolarWinds NPM Management Pack enables deep integration with Microsoft System Center Operations Manager (SCOM) 2007 and Microsoft System Center Essentials 2007.

### Integration with other IT Management Solutions


NPM integrates with all network, server and application management solutions from SolarWinds, including Server & Application Monitor (SAM), Network Configuration Monitor (NCM), NetFlow Traffic Analyzer (NTA), and VoIP & Network Quality Manager (VNQM).

NPM also integrates with SolarWinds Virtualization Manager for advanced and in-depth visibility into your virtual and storage infrastructure. In addition, NPM integrates with SolarWinds Web Help Desk to allow auto-population of network alerts into service desk tickets.

## SYSTEM REQUIREMENTS

HARDWARE	MINIMUM REQUIREMENTS
CPU	Dual processor, 3.0 GHz
Memory	3 GB
Hard Drive	20 GB free disk space is recommended
SOFTWARE	MINIMUM REQUIREMENTS
OS	Windows Server 2003 SP2, including R2, 32- or 64-bit, with IIS in 32-bit mode Windows Server 2008, 2008 SP2, 2008 R2, 2008 R2 SP1, and 2012 R2
.NET Framework	.NET 3.5 SP1 and .NET 4.0 are required
Database	SolarWinds supports Express, Standard, or Enterprise versions of the following: <ul style="list-style-type: none"> <li>- SQL Server 2005 SP3.</li> <li><i>Note: SolarWinds recommends that you upgrade to:</i></li> <li>- SQL Server 2005 SP4 or, preferably, SQL Server 2008</li> <li>- SQL Server 2008 without SP, with SP1, with SP2, or with SP3</li> <li>- SQL Server 2008 R2 without SP, with SP1, or with SP2</li> <li>- SQL Server 2012 without SP or SP1</li> <li>- SQL Server 2014</li> </ul>

NOTE: The minimum server requirements listed assume default configuration. Significantly increasing the poll rate or statistic collection rate could result in additional load on the server, which may require a larger CPU or additional memory.


DOWNLOAD FREE TRIAL

Fully Functional for 30 Days

## TRY BEFORE YOU BUY. DOWNLOAD A FREE TRIAL!

Don't just take our word for it. At SolarWinds, we believe you should try our software before you buy. That's why we offer free trials that deliver full product functionality. Simply download and install the software and take a break while Network Performance Monitor discovers your network devices. When you get back, your monitoring environment will be waiting for you—complete with out-of-the-box dashboards, alerts, reports, and more! It's just that simple!

## ABOUT SOLARWINDS

SolarWinds (NYSE: SWI) provides powerful and affordable IT management software to customers worldwide. Focused exclusively on IT Pros, we strive to eliminate the complexity in IT management software that many have been forced to accept from traditional enterprise software vendors. SolarWinds delivers on this commitment with unexpected simplicity through products that are easy to find, buy, use, and maintain, while providing the power to address any IT management problem on any scale. Our solutions are rooted in our deep connection to our user base, which interacts in our online community, thwack®, to solve problems, share technology and best practices, and directly participate in our product development process.

## LEARN MORE

Learn more at <http://www.solarwinds.com>.

For product information about SolarWinds products, visit [solarwinds.com](http://www.solarwinds.com), call, or email:  
7171 Southwest Parkway | Building 400 | Austin, Texas 78735

Fully Functional for 30 Days

### AMERICAS

Phone: 866.530.8100  
Fax: 512.682.9301  
E-mail: [sales@solarwinds.com](mailto:sales@solarwinds.com)

### EMEA

Phone: +353 21 5002900  
Fax: +353 212 380 232  
E-mail: [sales@solarwinds.com](mailto:sales@solarwinds.com)

### APAC

Tel : +65 6593 7600  
Fax : +65 6593 7601  
Email: [apacsales@solarwinds.com](mailto:apacsales@solarwinds.com)